

THE ROCKET

WHERE THE ACTION IS

April 19 - April 21, 2022

SECTION

Leading Rocket Member Publications

Avoca Journal Herald • 888-343-2154

Dunlap Reporter • 642-2791

Harlan PennySaver

800-909-6397

Mapleton Press • 881-1101

Covering Charter Oak, Schleswig & Ute

Oakland Herald

888-343-2154

Missouri Valley Times

642-2791

Harrison County Merchandiser

642-2791

Coverage also includes Denison & Crawford County, Manilla, Manning, Woodbine & Logan, Pottawattamie County & Council Bluffs rural routes

FREE

Edwards BARGAIN CENTER



OVER 250 CARS TO CHOOSE FROM!

Largest Selection of Cars Under \$5,000 In The Area!

BANK FINANCING
Available on Most Vehicles, with approved credit

CALL TODAY: 712-256-5858

'14 DODGE CHARGER
#ZH10033B, 92K **\$15,500**

CALL TODAY: 712-256-5858

'14 INFINITI Q50
#ZH60092B, Red **\$17,500**

CALL TODAY: 712-256-5858

'96 LEXUS LS 400
Beige **\$6,900**

CALL TODAY: 712-256-5858

'14 CADILLAC ESCALADE
#ZM60276A, Black **\$26,334**

CALL TODAY: 712-256-5858

'00 CHEVY CAMARO
#ZH10152A, Only 3,433 Miles! **\$29,900**

CALL TODAY: 712-256-5858

'16 HONDA ACCORD
#ZJ1599B, Black **\$14,900**

CALL TODAY: 712-256-5858

'15 NISSAN ROGUE
#ZN221301C, 124K **\$12,249**

CALL TODAY: 712-256-5858

'11 CHEVY MALIBU
#ZC45018A, Brown **\$6,812**

CALL TODAY: 712-256-5858

'12 VOLKSWAGEN JETTA
#ZN221364C, Brown **\$8,900**

CALL TODAY: 712-256-5858

'15 CHEVY SILVERADO
#ZC44889B, Blue **\$28,500**

CALL TODAY: 712-256-5858

'16 NISSAN FRONTIER
#ZJ03471A, 112K **\$23,900**

CALL TODAY: 712-256-5858

'12 JEEP WRANGLER
#ZC44830A, 95K **\$21,469**

CALL TODAY: 712-256-5858

'20 CHEVY MALIBU
#ZH10055B1, Gray **\$19,763**

CALL TODAY: 712-256-5858

'17 HYUNDAI SONATA
#ZM59574A, 98K **\$17,249**

CALL TODAY: 712-256-5858

'15 BUICK ENCLAVE
#ZK221445A, 133K **\$18,333**

CALL TODAY: 712-256-5858

'01 DODGE RAM
#ZJ03508B, 5.9 Cummins 5 sp. manual **\$14,900**

CALL TODAY: 712-256-5858

'14 MITSUBISHI OUTLANDER
#ZH10053A, Gray **\$14,444**

CALL TODAY: 712-256-5858

'08 DODGE RAM
#ZH60093B, Black **\$10,111**

CALL TODAY: 712-256-5858

'13 FORD EDGE
#ZX29217A, Red **\$9,995**

CALL TODAY: 712-256-5858

'09 LINCOLN MKX
#ZH60261A, Black **\$8,900**

View Our Entire Listing Of Bargain Center Cars Online

1011 34th Avenue - Lake Manawa Exit, Council Bluffs, IA • 712-256-5858

WWW.EDWARDSAUTOGROUP.COM

FARM MACHINERY, ANTIQUES, AND HOUSEHOLD

PUBLIC AUCTION

Live and Simulcast!

SATURDAY, APRIL 30, 2022 • 11:00 A.M.

AUCTION LOCATION: 2951 Lenox Ave., Oto, IA

AUCTIONEER'S NOTES: The starting time for the live/internet items will begin promptly at 11:00 A.M.
OPEN HOUSE: Friday, April 29, 2022 from 4:00-6:00 P.M.
PICK-UP: Sunday, April 31, 2022 from 9:00 A.M.-12:00 P.M.

LIVE & INTERNET: Early model J.D. 3020 gas tractor, n.f. synchro, 3 pt., dual hyd., exc. 15.5x34's, fair front tires, very straight and clean, always stored inside; Westendorf WL21 loader w/72" quick-attach bucket, 3020 mts., very clean; Bomgaars 7ft. 3pt. blade, like new; J.D. G345 lawn & garden tractor, nice cond., with 52" deck, rear mt. sprayer, 1426 hrs.; Wooden flair box totally rebuilt 9' 4" L x 5' on top w/44" across bottom, on gd. steel wheel gear; Craftsman 4"x36" belt sander w/2/3 h.p. motor; Craftsman 10" compound miter saw; Craftsman 10" radial arm saw; Craftsman 15" scroll saw; Craftsman 12spd 15" 1 h.p. drill press; Craftsman 150 p.s.i. 3 h.p. 15 gal. air compressor w/ hose & reel; Stihl MS170 chainsaw, like new; Rigid R300S reciprocal saw; Flair Lawn 3'x5' lawn & garden 2-wheel trailer; Predator 3100 p.s.i. 8 g.p.m. pressure washer on 2-wheel cart; 2 sections with hitches Western Land Roller; 275 gal. gas bbl w/ hand pump; Pacer 150 g.p.m. 2" transfer pump w/B&Serg.550 engine; J.D. 4' pull type lawn aerator, like new; Antique stove: Cribben & Sexton Company Chicago 62" tall x 28" wide x 52" long, heavy cook stove; Antique icebox: mint 4' high x 3' wide x 21" deep; 2 wheel 6x9 1/2 utility trailer with metal floor. Good condition. Registered and licensed. **CAR:** 1971 Ford Torino 500, 2 door w/exc. vinyl top, cream/gold color, gold vinyl interior, gd. tires, p.s., p.b., a.c., 351 V-8, o rust, always stored inside & covered, 71,000 actual miles. A very nice clean car! 100% original; 1960? New Holland Silver Rush Promotional item 1880's-1890's Silver Dollar Set. Originally given to Slota Implement, Mapleton, IA



TOOLS & LAWN & GARDEN: Craftsman 5.0 22" single stage snowblower; Troy-Bilt rear tine tiller; 2-wheel hand cart; Stihl FS55R gas trimmer; Weed Eater Feather lite gas trimmer; Mark Industrial 1/4 h.p. bench grinder; Craftsman 6.5 amp. new recip. saw; Pr. metal car ramps; Lincoln arc welder; Floor jack; battery charger; Discharge hoses; 2 rolls woven 1 1/2" water hoses; Keller 8' fiberglass ladder; 20' alum ladder; Tool Kraft 10" table saw; Homak double stack tool cabinets; Shop benches; 5" table vise; Large selection of quality hand tools, wrenches, sockets, gd. log chains; Many gd. lawn & garden tools; One section harrow; 6 livestock panels; gates; 100 steel posts; wooden posts; 2 gas garden tillers
MODERN FURNITURE: La-Z-Boy electric recliner; 6 Lifetime folding chairs and table; Like new sewing machine; Tables, chairs, furniture; Numerous nice kitchen appliances; Sports equipment; Electric roaster; canning items; Wrought iron patio set; wrought iron glider
QUALITY ANTIQUES: 45" round oak table quartersawn, w/2 leaves; Spring buggy seat; Exc. Singer treadle sewing machine w/accessories; Vintage radios; ornate clock floor lamp; May old lawn & garden items; 3' oval tin tub; Flexible Flyer sled-exc. cond.; Many nice collectable smalls; Cast iron bird feeder J.D. implement jack; Pr. kerosene heaters; Nice 3pc. wicker porch set; Mantle clock; several nice old chairs; Depression glass; Circle of Friends collection; Cook books 1982-1994; Collection of vintage angels; Special Note! Many pcs. of area promo items and area memorabilia; area family quilt from St. Mary's in Oto, etc.

VINCENT AND CAROL McDONALD: OWNERS

Sale Conducted by:



Since 1939

Auctioneers, Real Estate Brokers & Appraisers
 Phone: 712-882-2406
 426 Main, Mapleton, IA 51034
 Website: www.iowaland.net
 Email: iowaland@longlines.com

For More Pictures Please See: www.iowaland.net

TERMS AND CONDITIONS: ON-SITE BUYERS: Cash or good check on the day of the sale and bidders must have driver's license to obtain bidding number. No credit cards, no delayed settlements or pick up days, unless other arrangements are approved by the auction company. **ON-LINE BUYERS:** There is no buyer's premium, however, all sales will be charged to the credit card on file with Proxibid, and a 3.5% convenience fee will be charged unless previous arrangements are made. Pick up time for items purchased will be May 1, 2022 10:00 A.M.-12:00 P.M., or May 2, 2022 9:00 A.M.-11:00 A.M. No purchases will be shipped. Pre-bidding begins on Proxibid on April 18, 2022. Any announcements made the day of the auction supersede any previously given information. No items shall be removed until paid in full. Not responsible for accidents or theft. No warranties or guarantees implied or expressed and all information provided is provided to the best of our knowledge. If you have any questions, please contact Midwestern Land and Auction, Inc. @ 712-882-2406.

SPECIALIZING IN QUALITY POST FRAME BUILDINGS



Commercial
 Equestrian
 Hobby Shops

Agricultural
 Garages
 And More!

NE and Western IA
 1903 Hwy. 30
 Missouri Valley, IA 51555
 402-426-5022
 712-600-2410

Wisconsin
 N6522 US Hwy. 51 STE C1
 Portage, WI 53901
 608-988-6338
 920-889-0960



www.GingerichStructures.com



It Pays to Advertise in The ROCKET

R&S MACHINERY

Ph. 515-230-2524 • Ogden, IA

www.randsmachinery.com

• TRACTOR •

'96 C-IH 7220 MFWD, Duals, Wgts, 5500H Call

• TILLAGE EQUIPMENT •

JD 637 Disc, 29' 3", 3-Bar Harrow Call

C-IH 3950 Disc, 29' 3", 3-Bar Harrow, Hyd. Level \$17,500

C-IH RMX 340 Disc, 25', 3-Bar Harrow Call

• PLANTING & SEEDING •

JD 7300 8RN, 3 pt., Coulters Call

JD 7200 6RN, Vac, TW, Shedded \$9,000

Kinze 3100 8RN, 3 pt., Hyd. Drive, Insecticide \$14,500

C-IH 1200 6RN, 3 pt., TW, Could be 8RN \$10,500

C-IH 955 8RN, TW, Nice Planter \$9,950

Kinze 3500, 6RN, Pivot, Combo's, Low Acres \$34,500

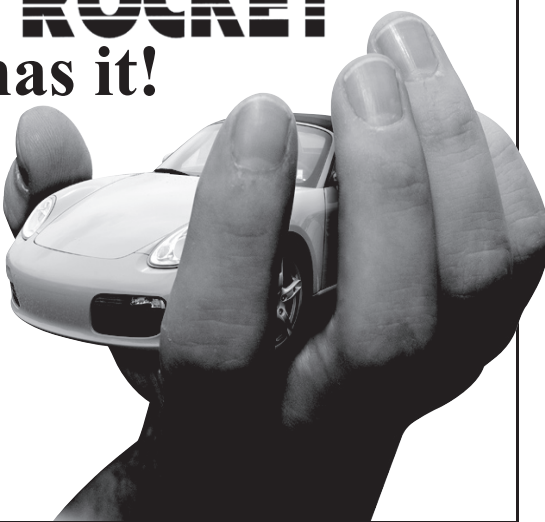
White 6700, 8RN, 3 pt., TW, Good Cond \$7,250

Cash paid for good used machinery. Give us a call.

Whatever you need



has it!



Looking for a new ride? Trying to sell your old one? Try using The Rocket. We have ads for a wide range of automobiles, most of which are removed from The Rocket within two weeks due to successful sales. Whether you're buying or selling an automobile, scan the Rocket today!

DUNLAP LIVESTOCK AUCTION

701 Hwy 30 W, Dunlap, IA 51529, 712-643-5761

Sale Times for Tuesday, April 26th @ 9:00 am Fed Cattle, followed by Weigh Cows & Bulls, Feeder Cattle @ 12:30pm then Bred Cows/Pairs/Breeding Bulls

Western IA Feeder Cattle Producers scholarship forms are in our office. They are due May 1st. Open to any families who market calves on a sanctioned Western Iowa PC auction.

Special Calf/Yrkg - Friday April 22nd @ 10:30 - Expecting 2000 Head

Last week live cattle & feeder cattle improved \$2 plus on the board. Short term fed cattle supplies look to be in the seller's favor. Can we move these to \$150 over the next few weeks?? It sure would be nice. With grain at these levels & looking possibly moving higher it is a must we get fed cattle to the \$160 levels. If that happens, we can possibly keep feeder cattle moving along nicely. With cutouts supporting \$170 live cattle there is plenty enough value there for thing to happen. I hope you all enjoyed your Easter holiday.

Fed Cattle/Weigh Cows: Tuesday, April 12th:
 Fed Cattle were \$1-\$2 higher. We had 2 loads of calf fed, black hided dairy X S/H that brought \$135-\$138.50. High grading cattle were in high demand. I thought weigh cows were fully steady, but overall quality was down from the week before.

WEIGH COWS 254 hd	FAT CATTLE 372 hd	Strs	Hfrs
Fed Cows \$78-\$90	Top	\$145.25	\$145
Bulk Cows \$73-\$83	Choice	\$141-\$145.25	\$145
Low Yield \$55-\$65	Str. Select/Choice	\$135-\$140	\$135-\$139
High Yield Bulls \$115-\$123	2-Ways	\$No Test	\$No Test
Bulk of Bulls \$100-\$115	Choice Holsteins	\$130-\$138.75	
Cutting Bulls \$90-\$100	Select Holsteins	\$No Test	
Preg open hfrs \$115-\$130	Fat Hfrts	\$95-\$115	
Hfrts \$70-\$100			

UPCOMING AUCTIONS

Friday, April 22nd: Special Calf/Yrkg
 Saturday April 23rd: 10AM - Ron Newcomb Estate - Harlan IA;
 Antique Collectable Primitive Auction, SCHABEN AUCTION SERVICE
 Wednesday, May 4th: Special Bred Female
 Friday, May 6th: Special Calf/Yrkg
 Wednesday, May 18th: Special Bred Female

Office: 712-643-5761

Jim Schaben Jr. 263-9449 • Jon Schaben 263-0755
 Will Epperly 712-269-5677 • Don Stessman 712-263-7505
 Bob Paulsrud 712-830-7438 • Greg Drake 712-304-4325

Web Site: www.dunlaplivestock.com

ANTIQUES, COLLECTABLE & PRIMITIVE AUCTION - RON NEWCOMB ESTATE

SATURDAY, APRIL 23rd 2022 @ 10:00 am

SALE LOCATION: 1516 CHEYENNE AVE. HARLAN, IOWA

Adding more pictures as we find more items.

Please check our website often! www.dunlaplivestock.com

TERMS: Cash or check with proper ID. Nothing removed until settled for. Not responsible for accidents. For more information call 712-579-7038 or Jim Schaben @ 712-269-9449.

SCHABEN AUCTION SERVICE

Jay, Jim Jr., Jon, Austin Schaben & Will Epperly
 701 Hwy 30 West, Dunlap, IA 51529
 712-643-5761 www.dunlaplivestock.com


FOR SALE: Farm tractor/truck batteries - \$50 Each. 13"x7" - 8" tall. Obtained from truck firm that replaces batteries every year - most only 12-14 months old! Crank amps 650 and above. New inventory and back to the old price since batteries are now available. Call Don, Avoca, Iowa 402-681-4763. tfn*

FOR SALE: 32"x-72"x16" Wood Golf Club Shed Cabinet for clubs, shoes, etc. 3/4" plywood construction with sturdy hinges and paddle lock door lock. Please call Don Nielson 402-681-4763 in Avoca, Iowa. tfn*

HELP WANTED: St. Paul Lutheran Preschool is accepting applications for a Director and a part-time teacher associate. If interested call 712-796-1177 or email at admin@treynorpreschool.com. 16-17+

WANTED DAMAGED GRAIN
Feed - Fertilizer
 Trucks & Vacs Available
 Licensed • Bonded
KOSTER GRAIN, INC.
 Carroll, Iowa 51401
 Phone: 1-800-798-5421

HENRY WELL COMPANY
WATER WELLS
 CALL:
1-800-432-0008
 OAKLAND, IOWA
SINCE 1956

FOR SALE

USED 9'6" BOAT-SHAPED CONFERENCE TABLE
 With 8 Swivel Stuffed Arm Chairs
In Great Shape!

USED COPY MACHINE CABINETS
 with storage space

 24" Tall x 25.5" Wide x 21.5" Deep
\$50


 11" Tall x 21.5" Wide x 19.5" Deep
\$30
 Call Don
402-681-4763
 Avoca, Iowa

No Hassle. Convenient. Real-Time BIDDING. ONLINE Auctions.
 Sell with confidence! We will promote your items to **qualified** bidders from 90+ countries.
 AuctionTime.com
Gary JURANEK & Associates
 Auctioneers & Real Estate
Gary Juranek, Auctioneer 402-659-4932
Bob Husz, Field Representative 402-981-4307
www.juranekonlineauctions.com

TRACTOR PAINTING & SAND BLASTING
 Truck, Farm or Industrial Equipment Painting

MOST TRACTORS: \$2,375
 24 Years Experience
DEAN'S AUTOBODY & SAND BLASTING
 SHELBY, IOWA 712-544-2365

NOW HIRING IN THE COUNCIL BLUFFS AREA:
Southwest IA Transit Agency (SWITA)
 Is Seeking Part-Time **DRIVERS**
 Applicant must possess or be willing to acquire a commercial driver's license class C with passenger endorsement (SWITA will assist with drive test), and enjoy working with the public. Starting wage is \$15.00 per hour, plus a shift differential when driving at night, IPERS, and PTO. Applicant must be able to pass a CDL Medical Exam and a DOT pre-employment drug screen.
 For questions contact Daurine Petersen at 866-279-4720. Applications can be found at www.swipco.org under career opportunities, or call our office to have an application mailed to you. Please send the application to SWITA, Attn: Daurine, 1501 SW 7th St., Atlantic, Iowa, 50022 or email daurine.petersen@swipco.org. SWIPCO is an equal opportunity provider, employer, and lender.

Reward Yourself With a Career You Love!

 REM Iowa is expanding their team of **Direct Support Professionals/Caregivers** in Shelby, Harlan, Avoca & Atlantic.
 Don't Miss Out - Apply Today!
Jobs.thementornetwork.com/iowa-jobs
REM IOWA EOE

SENTINEL BUILDING SYSTEMS
 A division of GLOBAL Industries, Inc.
 Excellence in All-Steel Buildings

 Moeller Trucking, Denison, Iowa
 Specializing in Grain Bins • Buildings • Electrical
Zimmerman Sales & Service
 Neola, IA • 712-485-2677 or 1-800-377-1685
www.sentinelbuildings.com


WE ARE HIRING!
 • BUS DRIVERS
 • CLASSROOM ASSOCIATES
 • NIGHT CUSTODIANS
 SEND YOUR RESUME TO :
 Mr. Darin Jones
 768 S Maple Street
 Avoca, IA 51521
 • Applications can also be picked up in our district office.
JOIN OUR TEAM


WE'VE GONE GREEN WE'VE GONE GREEN
USING ENVIRONMENTALLY-FRIENDLY WATERBORNE FINISHES
 We believe in preserving our future. That is why our collision center chose environmentally-friendly products, including high performance waterborne automotive refinish coatings, from PPG.
 • Higher resolution color than traditional solvent body shops
 • We've reduced our volatile emissions by up to 80%
 • Improved air quality for the work environment & community
 • Reduced hazardous waste
 • Lifetime Limited Warranty for as long as you own your vehicle!
Green Business for a Greener Community!

Hetrick Auto Body

 Phone 712-781-2211
 Fax: 712-781-2219
 Toll Free: 1-800-568-8513
www.hetrickauto.com


OPEN HOUSE

Friday 7:30 AM - 5:00 PM

Saturday 8:00 AM - Noon

Lunch Served Friday 11 AM - 2 PM | Donuts Saturday Morning!

Cub Cadet

GET FACTORY AUTHORIZED SALES AND SERVICE
AVAILABLE ONLY AT YOUR CUB CADET INDEPENDENT DEALER

WE OFFER:

- Extensive Parts and Service Capabilities Featuring:
 - Cub Cadet Certified Technicians
 - Cub Cadet Original Equipment Parts
 - Attachments and Accessories
- Pickup and Delivery Options
- Convenient Location



SCHEDULE YOUR SERVICE VISIT TODAY!

YOUR INDEPENDENT DEALER - EXPERT SERVICE. LOCALLY OWNED.
THE ADVICE, SERVICE, SELECTION AND SUPPORT YOU NEED TO FIND THE RIGHT FIT FOR YOU.

NEXT - LEVEL PRODUCTIVITY

Take your tractor's productivity to the next level this season.

Designed for challenging terrain, the YANMAR SA424 tractor has greater ground clearance and provides a rugged, stable platform for the work you need to do.

Powered by a famously reliable YANMAR three-cylinder diesel engine, the SA424 delivers a unique combination of horsepower and fuel efficiency.

And the new operator platform was designed with you in mind. It's easier to climb on and off. The seat is more comfortable, and every instrument and control is at your fingertips.

10 YEAR LIMITED POWERTRAIN WARRANTY

#1 RANKED

2020 • 2019 • 2018 **PRODUCT QUALITY**

YANMAR TRACTOR MODELS
SA SERIES 21- & 24-HP • YT2 Series 35 HP platform & cab • YT3 Series 47 & 59 HP platform & cab

To learn more or to find a dealer nearest you, please visit YANMARTRACTOR.com.

**DOOR PRIZES!
IN-STORE SPECIALS!
GIVE-AWAYS!**

RIDE AND DRIVE!

- Lawn Mower
- Side-By-Side
- Tractors

TORO



MyRIDE® TimeCutter® HD Zero Turn Mower with MyRIDE® Suspension System

- MyRIDE® Suspension System – suspended operator platform with adjustable rear shocks for maximum comfort
- 24.5 hp* Toro® Commercial V-Twin 708cc Engine with Self-Cleaning Air Filter Housing
- 60" fabricated deck with Grade 50 high-strength 10-gauge steel
- Commercial-grade HG-ZT3100 transmissions

Double-Punch On All Wayne Dog Food!

WAYNE FEEDS

Peep In At Our **Baby Chicks!**

ORDER NOW For Delivery THIS Spring!



25% OFF All In Stock Dryshod Boots!



Yanmar Brahma Diesel UTV

The Brahma is powered by a famously reliable 993cc, three-cylinder Yanmar diesel engine. Built with work capabilities as the top priority, the Brahma is a purebred work machine with amazing hauling and pulling power that sacrifices nothing to driver comfort.

Learn more at yanmarutv.com.

YANMAR

STIHL

Outdoor Power Equipment **MADE IN AMERICA!**



NELSON FARM SUPPLY

HWY. 44 EAST • HARLAN, IA

(712) 755-3115 • 1-800-772-6184

HARLAN PENNSAVER/ROCKET

04/19/2022

RECEPTIONIST WANTED

Keast Auto Center in Harlan, Iowa is seeking a FULL-TIME RECEPTIONIST.

The right candidate will need to have experience with computers and the ability to greet and work with customers and other employees in a friendly and professional manner.

This is a full-time position with benefits that include, health insurance, paid vacation, and 401K retirement plan.

If you wish to apply, please send a resume to Bobbi Sieh, at bobbi@keastmotors.com, or stop in to fill out an application. Please feel free to contact Bobbi at 800-234-4927 if you have any questions about the position.



Ford • Chevy • GMC
Buick • Lincoln
Highway 59, Harlan, IA
(712) 755-2116

EOE

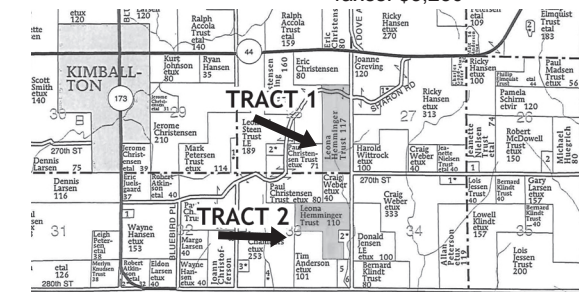
AUDUBON COUNTY FARMLAND AUCTION

Leona Hemminger Trust
227 ACRES M/L sold in
2 tracts, Bareground

Thursday, June 9, 2021, 10 AM
Elk Horn, Iowa Town Hall

TRACT #1: 116.93 Acres
M/L, Section 28-79N-36W,
Sharon Twp, CSR-2: 69,
96.55 crop acres, Buyer
shall receive a cash rent
credit at closing of \$9,700,
Taxes: \$3,582

TRACT #2: 109.54 acres
M/L, Section 33, Sharon
Twp, CSR-2: 63.6, 92.81
crop acres plus 7.13 acres
CRP waterways, Buyer shall
receive a cash rent credit at
closing of \$9,300
Taxes: \$3,230



Terms: 10% down sale day into Wayne Hansen Real Estate Trust, balance due 9/9/2022, with full possession 3/1/2023.
Wayne Hansen Real Estate, represents the seller in these transactions. Sellers shall retain 2022 CRP payments. Announcements sale day take precedence over printed materials. FSA info is believed accurate, but not guaranteed by sellers or broker. Call for complete legals. Bids are not subject to finance. Taxes prorated to closing.

View Maps & Drone Video at waynehansen.com. For more information call 712-249-1785



SEE OUR WEBSITE FOR
ADDITIONAL LISTINGS:
• HOMES
• ACREAGES
• BUSINESSES • FARMS

For Sale... SEED OATS!

Grown by the seller! A traditional yellow oat, medium height, good for forage, grain or cover. 99% germ. 45 lb. test weight. Bags only. \$13.50 per bag. 1.5 bushels per bag
FREE DELIVERY.
Cell: (712) 579-6979
Home: (712) 747-6081. Dave Gaul

More than just a job.
We offer an
opportunity to grow!

WAREHOUSE & PRODUCTION!
Starting pay \$21.05/hour
Plus \$3/hour shift differential
AND \$3/hour weekend bonus!
Attractive Benefits Package
& Options

INDUSTRIAL MECHANIC
Positions Available!
Wage Commensurate
with experience!

Apply In Person or Online!
Menards Visitor Center
9 East Street Shelby, IA 51570
Mon-Fri 7am to 4pm
712-207-2710
www.menards.com/careers

MENARDS®
Shelby Distribution Center
Equal Opportunity Employer

DENNY WELCH

MOWING
712-404-8345

Retired Veteran
specializing in
mowing of rural
cemeteries,
churches, grain bin
sites, etc.

MINDEN, IA SENIOR HOUSING

Minden Senior Citizens Housing
Now taking applications for one
bedroom apartments with laundry
facilities and parking on site.
Must be 62 years of age or older,
disabled regardless of age.
Rent is based on 30% of income.

Contact Knudson
Management Co. Inc.
712-328-2222

This institution is an Equal Opportunity Provider.

HELP WANTED

Shelby County Road Dept.
is looking for seasonal help
for the

**Bridge Crew &
Road Departments**

Must be 18 years of age.
Class B CDL preferred or
able to obtain CDL within
1 month upon hire date.

Starting wage
\$18.00/per hour.

Applications may be
picked up at the
Shelby County
Engineers Office
1411 Industrial Pkwy.
Harlan, IA



ELITE OCTANE IS LOOKING FOR
• MAINTENANCE MECHANIC/WELDER
• MAINTENANCE I & E
• LABORATORY TECHNICIAN

ELITEOCTANE

Job descriptions, starting wages and applications are available at
www.eliteoctane.net

Submit application/resume to
ateigen@eliteoctane.net, fax: 712-254-9851
Mail to 60502 Glacier Road, Atlantic, IA 50022 or
stop by our office to pick up an application.

Elite Octane is a drug free workplace and equal opportunity employer.

Agricultural Advertising to Grow Your Business

THE
ROCKET



Start a CAREER

OFFERING FLEXIBLE WORKING HOURS
WITH 4 & 5-DAY WORK SCHEDULES

- 100% family HSA health insurance paid
- 7% match with a 401K Retirement Plan
- Up to 180 hours paid PTO time

- Paid Holidays
- No Weekends or Holidays
- Safety & Profit sharing bonus available

JOIN OUR QUALITY GROWING COMPANY &
BECOME PART OF OUR FAMILY OWNED BUSINESS!

CURRENT OPENINGS

**DAY ROUTE DRIVER &
LINE HAUL DRIVERS**

(CDL Required - willing to train the right applicant)

Class A - full or part time
Hourly rates from \$27.05 to \$29.05
or Class B - full or part time

EVENING ROUTER



800-489-2088, ext. 224
600 LaSalle Ave. • Panama, IA

REV UP SALES!

Advertise in *THE ROCKET* and put your
business on the road to success. With
valuable exposure, your ad will be at the center
of attention for over 77,000 READERS!

Call a Rocket Member



FREE QUOTES

High Risk Auto Insurance
TOO HIGH? (SR-22 Filings)
See

CENTURY FARM INSURANCE
1117 7TH St., Harlan
712-755-3171 • 877-755-3171

For Sale: Goldendoodle Puppies for Sale. Mini - Medium Sized 25-45lbs. Tested for Genetic disease, shedding gene, & OFA. Raised in home. Call (630) 816-2146. Visit our website for more information, lowagoldendoodles.com R26

PLEASE DON'T DRINK AND DRIVE!

ASSETS ↔ CASH

Planning an auction or farm sale? Make your advertising dollars target your market by advertising here!



THE ROCKET
WHERE THE ACTION IS
CALL A ROCKET MEMBER

IOWA STATE UNIVERSITY
Extension and Outreach

Shelby County • 906 6th St. Harlan, IA • 712-755-3104

Iowa Concern Hotline
800-447-1985

Finances • Legal Concerns • Stress
Disaster Recovery • Resources • Referral

24/7 phone support • confidential • free

PART TIME HELP WANTED

The Shelby County Solid Waste Agency is taking applications until position is filled for part-time scale house operator. Working 7 days on and 7 days off. Starting \$12.50 per hour. Applications may be obtained at Shelby County Engineers Office, 1411 Industrial Pkwy. Harlan 755-5954.

ESTES is Hiring in Avoca, IA



Join America's largest privately owned carrier and get the stability of a 90-year-old company with more than 22,000 teammates who have your back. At our core is a family-inspired culture built on integrity and trust that drives the way we work.



- Comprehensive benefits
- Two weeks paid time off plus holidays
- 401(k) plan with company match
- Company-provided uniforms and safety footwear program
- New equipment with latest safety tech

CURRENT OPENINGS

- Local CDL Driver
Hourly rates from \$26.90 to \$30.90
- Regional CDL Driver
Mileage rates from \$0.68 to \$0.7725



FOR MORE INFO, CALL (712) 343-4332
WORK4ESTES.COM

EEOE, including disability/vets

HYBRID LAND AUCTION

103.47 Taxable Acres m/l - Harrison County, IA
Monday, May 2nd, 2022 @ 11 A.M.
(LIVE & ONLINE)

Auction Location: Twisted Tail Steakhouse
BeeBeeTown, IA

Online Bidding at www.spencerauctiongroup.com
Section 19, Douglas Township, Harrison County, IA

Directions to the Farm: From Hwy. 30 South of Woodbine, IA - East on 194th approximately 2 miles. Farm is located on the South side of 194th Ave and the West side of Slater Ave.

Brief Legal: The NW 1/4 NE 1/4; part of the NE 1/4 NE 1/4 and part of the SE 1/4 NE 1/4 located in Section 19, Douglas Twp, Harrison County, IA

FSA Information: Farm #6210 Tract #3982
Cropland: 102.21

Corn Base: 84.4 PLC Yield: 138

Bean Base: 12.6 PLC Yield: 36

CSR2: 54.9 Per Surety Maps

Taxes: \$2,666 prorated at the date of closing

Lawrence Shaffer Estate, Owner
Gloria Allen, Executor of the Estate
Todd Argotsigner, Attorney for the Estate

Spencer Auction Group



402-510-3276 Ed Spencer
402-510-5853 Luke Spencer
712-592-1317 Steve Christiansen
712-592-9794 Hannah Johnsen
322 E 7TH ST. LOGAN, IA 51546
712-644-2151

www.spencerauctiongroup.com

THE ROCKET

- Avoca Journal Herald 888-343-2154
 - Dunlap Reporter 712-642-2791
 - Harlan PennySaver 800-909-6397
 - Mapleton Press Covering Charter Oak, Schleswig & Ute 712-881-1101
 - Oakland Herald 888-343-2154
 - Missouri Valley Times-News 712-642-2791
 - Harrison Co. Merchandiser 712-642-2791
- Coverage also includes Denison & Crawford County, Manilla, Manning, Woodbine & Logan, Pott. County & Council Bluffs rural routes

You're worthless.

You don't see bullying like this every day. Your kids do.

Teach your kids how to be more than a bystander.

Learn how at StopBullying.gov



FREE TO BE... YOU AND ME



MANNING ROCKET • 04/19/22

If you're thinking about a new home, you don't want to miss this event

GREEN ACRES HOMES
HUGE OPEN HOUSE

Monday, April 18
thru Saturday, April 23
9:00 am - 5:00 pm



• Custom plans welcome, bring yours for a quote.



See the latest in housing, ceramic tile showers, fireplaces, designer kitchens, beautiful bathrooms, porches, exceptional utility rooms and impressive interiors!

Choose from:

- Single wide and sectional manufactured homes
- Ranch, split foyer, tri-level,
- 1½ and 2 story modular homes

FREE delivery & installation & the best prices on quality homes you can find!

Invest in your new home during our Open House & Save BIG! Save up to \$5,500

COME SEE US THIS WEEK!
YOU'LL BE GLAD YOU DID!

Enjoy refreshments and drawing for prizes.

GREEN ACRES HOMES

3003 Murray Road • Estherville, IA 51334
1-800-397-5545 • www.greenacresnewhomes.com

ADVERTISE IN THE ROCKET!!

Looking for a new job, a second job or a career switch? Check **THE ROCKET** first for the most complete, up-to-date employment listings in the area.



DENISON LIVESTOCK AUCTION

Established Since 1943



• Feeder Pigs 8:30 a.m. • Misc. 9:00 a.m.
 Sheep 9:00 a.m. • Cow 11:00 a.m.
 Followed by Feeder Cattle



Sale for Saturday, April 23rd

PIGS

Sold 69 Weigh Sows
 350 - 450# \$65.00 - \$75.00
 450 - 550# \$68.00 - \$76.00
 550 - 650# \$71.00 - \$77.00
Big Boars \$11
Light Boars \$30-\$55
Sold 117 Butchers
 Top \$77 Many \$74 plus

COWS

10 BI Cows: running age w/calves @ side
4 BI & Red Cows w/twin calves @ side
 Sold over **200 Bred Cows** - Pairs on Saturday.
 Should have 50 - 100 Bred Cows & Pairs.
Call Friday for consignments or just show up. Thanks

SHEEP

Call me if you are selling new crop lambs so I can call buyers from a distance.
 Thanks JR

CALVES & YEARLINGS

NEXT SPECIAL CALF & YEARLING SALE
 Thurs., April 28th 11:30 a.m.

MISCELLANEOUS

Hay & Straw will sell at 10am
 8 - 10' Corral gates
 Wood & Steel Posts
 Cattle Panels

BIRD FLU: NO FOWL OF ANY KIND WILL BE SOLD UNTIL FURTHER NOTICE! SORRY - NOT OUR RULES

Hope everybody had a safe and healthy Easter and made memories that will last forever. Had a friend do a little test. He put his dog and girlfriend in his trunk and drove around for 3 hours. When he opened the trunk up, who do you think was glad to see him? You're right...his dog. Dogs really are a man's best friend.

★ UPCOMING SALES ★

Saturday, May 14th 8:00 a.m. Good Crawford County Farmground, William Sander, owner

Monday, May 23rd 5:30 p.m. Absolute 3-4 bedroom home auction, 130 Cedar Street, Westside, Richard Schierenbeck Estate, seller

Check out our web page at: www.denisonlivestock.com

For latest consignments, call Denison Livestock Auction, Denison, Iowa
 Barn 712 - 263-3149 • JR Mobile 712 - 269-7777 • Tom 712 - 263-0224

Dave Vanness 265-1189 • Randy Pryor 644-7610

ERV PAULEY & SONS, OWNERS-OPERATORS

FARM/HOUSEHOLD/LAND

AUCTIONS

Auctioneers - your listings also ARE on HarlanOnline.com's free online classified pages

April 23 - St. Albert Benefit Auction. Spencer Auction Group Auctioneers, Ed Spencer 402-510-3276, Luke Spencer 402-510-5853

April 23, 10 a.m. - Ron Newcomb Estate - Harlan IA - Antique Collectable Primitive Auction. Schaben Auction Service

April 24 - 12:30 p.m.; Guns, Ammo, Custom Built 80 Evolution Harley Davidson Trike, 2003 Bouget Motorcycle, 2 Cars, Tools; Doug & Cheryle Rose, Owners; 342 North Mildred, Carson, IA; Osborn Auction LLC

April 28 - 10 a.m. - 152 Acres M/L Shelby County Farmground, Clay Twp. Section 5, Joanne Potts Estate, 4212 Main St., Elk Horn Town Hall, Elk Horn, IA. Osborn Auction LLC & Wayne Hansen Real Estate LLC

May 2 - 11 am. 103.47 Taxable Acres m/l Section 19, Douglas Twp., Harrison County, IA; Auction Location: Twisted Tail Steakhouse BeeBeeTown, IA. Lawrence Shaffer Estate, Owner; Spencer Auction Group, 322 E 7th St., Logan, IA 712-644-2151

May 7 - 11 a.m. - Antiques, Household, Antique Tractors, Antique Cars, Gas Pumps, Misc. Farm Machinery. Donald & Marilyn Sorensen, Owners, 24739 MacPhearson Ave. Council Bluffs, IA - Osborn Auction LLC

May 21 - 10:30 a.m. - Gene & Jackie Blum, Owners, 1021 St. F32 Harlan, IA. 18 Antique JD Tractors, 3 MM, H, Oliver Tractors, Antique Hit & Miss Engines, Farm Machinery Auction. Osborn Auction LLC

June 6 - 11 a.m. Hybrid Land Auction, Online bidding begins Mon., May 30, 10 a.m. 226.55 acres Harrison County, Iowa, Douglas & Cass Twps, Twisted Tail Steakhouse, Beebeetown, IA. Offered in 3 Tracts: Home & acreage w/ 3 acres m/l Douglas Twp.; 111 acres m/l Douglas Twp. Sec-35; 112 acres m/l Cass Twp. Sec-2. Leuschen Family Farms, Owners, Ed Spencer, Broker/ Auctioneer 402-510-3276, Spencer Auction Group 712-644-2151 office, 322 E 7th St, Logan, IA. www.spencerauctiongroup.com

June 9 - 10 am, Leona Hemminger Trust Land Auction, 227 acres m/l sections 28 and 33 Sharon township Audubon Co 2 tracts. Elk Horn Town Hall, Wayne Hansen Real Estate LLC.

June 12, 2022 - 11:00 a.m. - Real Estate 2.47 Acres M/L, Coins, Antique, & Household Auction, Jeanie Klindt, Owner. Sale Location: 28199 450TH St., Avoca, IA; Osborn Auction LLC

June 18 - 11:00 am - Real Estate Acreage 5.33 Acres M/L, Tractors, Farm Machinery, Shop Equipment, Primitive Auction. Location: 24639 360th St. Hancock, IA - David W. Bintz Estate, Owner; Osborn Auction LLC

FOR RENT

Case IH

Turbo Tills

22 ft. or 25 ft. machines

Call Mike Schomers

H: 712-747-3232

C: 712-579-8020

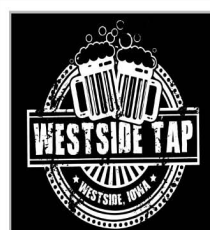
HELP WANTED:

The National Association of State Departments of Agriculture (NASDA) is hiring part time field enumerators to collect data for USDA/NASS. Qualifications: farm background, communication skills, computer knowledge. Starting wage: \$15/hr., mileage allowance is 58.5c. More info is available at NASDA.org. If interested, email cmerkey46@gmail.com.

TRUCK DRIVER WANTED MIDWEST HOPPER HAULING

Class A CDL - Competitive Wages - Benefit Package
 5 Days A Week

CALL 712-830-6497



ALWAYS WANTED TO OWN YOUR OWN BUSINESS? NOW IS YOUR CHANCE!!

The Westside Tap, located on Main Street in Westside, is FOR SALE!!! This profitable turn-key bar/restaurant has a loyal customer base and proven track record with plenty of opportunity for growth. We are willing to work with the right person/group to keep this business thriving in our community. Please call for showings/questions. Serious inquiries only - 515-490-3695.

Get the
Word
Out
FAST!

Advertise your
AUCTIONS
SALES or
HELP WANTED in
THE ROCKET

Denison Livestock SPECIAL CALF & YEARLING SALE

To be held at Denison Livestock Auction THURSDAY, APRIL 28TH • 11:30 A.M.

Expecting 2200 head • Most calves GT Vac manyX2

404 BI/Red Sts 800# - 950# Shelby	62 BI/Char Sts 875# - 925# W.O. Merridan
200 BI few Char SH 600# - 800# local farm	55 BI SH 450# - 650# Castana
130 BI Sts 800# - 850# pending	50 BI SH 550# - 700# Adair
120 BI/Red SH 400# - 650# Emerson	40 BWF Hfs 800# - 850# W.O. Merridan
100 BI SH 650# - 850# Dunlap	Hfs make exc replacements
100 BI Char X SH 650# - 800# Vail	1 Iron
100 BI SH 700# - 900# Castana	30 BI Sts 550# - 600# Neola
75 BI SH 700# - 900# Smithland	25 BI SH 550# - 700# Alta
70 Char Angus SH 700# - 900# Cleghorn	25 BI SH 500# - 700# Missouri Valley
70 BI SH 600# - 800# St. Charles	25 BI SH 400# - 500# Glidden
65 BI/BWF Sts 900# - 950# Mapleton	22 BI SH 400# - 600# Auburn
65 BI Hfs 775# - 850# W.O. Remsen Suitable to breed	14 BI/BWF SH 450# - 550# Moorhead
65 BI Sts 825# - 875# W.O. Neola	12 BI SH 600# - 700# Turin

500 - 700 cattle in late and smaller consignments 300# - 700#

For complete listing check website : www.denisonlivestock.com

For latest consignments, call Denison Livestock Auction, Denison, Iowa

• Barn (712) 263-3149 • JR Mobile (712) 269-7777 • Tom (712) 263-0224 • Dave Vanness (712) 265-1189

ERV PAULEY & SONS, OWNERS-OPERATORS



Publishing for over 50 years!

THE

ROCKET

WHERE THE ACTION IS.

and get results!

Place your Rocket ad by calling any of the following newspapers:

Avoca Journal Herald • 888-343-2154

Dunlap Reporter • 712-642-2791

Harlan PennySaver • 800-909-6397

Mapleton Press • 712-881-1101

Covering Charter Oak, Schleswig & Ute

Oakland Herald • 888-343-2154

Mo. Valley Times-News • 642-2791

Harrison Co. Merchandiser • 712-642-2791

Coverage also includes
Denison & Crawford
County,

Woodbine & Logan,

Pottawattamie County
& Council Bluffs
rural routes



CARS • CARS • CARS • CARS • CARS • CARS • CARS • CARS • CARS

FEATURE of the week



2019 Lincoln MKZ
Reserve II, FWD, #3382

\$41,495

2020 Ford Fusion
SE, FWD, #3388



\$26,995

2017 Honda Accord
Sport, SE, CVT, #21244C



\$18,995

CROSSOVERS • SUVs • VANS • CROSSOVERS • SUVs • VANS • CROSSOVERS • SUVs • VANS

2020 Ford Escape
SEL, AWD, #3404



\$35,995

2020 Ford Escape SE
FWD, #3314



\$24,995

2019 Chevy Equinox
FWD, LT, #3399



\$26,495

2018 Lincoln MKX
Reserve, AWD, #3325



\$36,995

FEATURE of the week



2017 Chevy Tahoe
4WD, premier, #3385A

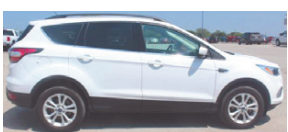
\$51,995

2018 Ford Edge
SEL, AWD, #3385



\$31,995

2018 Ford Escape
SE, FWD, #3313



\$19,995

2017 Ford Edge
Titanium, AWD, #22064A



\$26,495

2017 GMC Acadia
AWD, Denali, #22056A



\$34,495

TRUCKS • TRUCKS • TRUCKS • TRUCKS • TRUCKS • TRUCKS • TRUCKS • TRUCKS • TRUCKS

FEATURE of the week



2021 Chevy Silverado
Crew Cab, 4WD, High Country, #22042A

\$60,995

2021 Chevy Silverado
4WD, LTZ, Crew cab, #22039A



\$55,995

2021 GMC Sierra
Crew Cab, Short Box, SLT, 4WD, #22033A



\$55,995

2021 GMC SIERRA
Crew cab, 4WD, AT4, #21228A



\$79,995

2020 Ford F150
Lariat, Sport, 4WD, Supercrew, #3400



\$54,995

2020 Ford F150 XLT
4WD, Supercab, #22036A



\$49,410

2017 GMC Sierra
4WD, SLT, #21293A



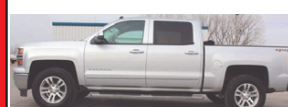
\$41,995

2015 Chevy Silverado
2500 Crew Cab, 4WD, LTZ, #22038A



\$42,995

2014 Chevy Silverado
4WD, LTZ, #21284A



\$21,995

OUR SALES STAFF IS WAITING TO ASSIST YOU



Jim Chance



Steve Keast



Brandon Brink



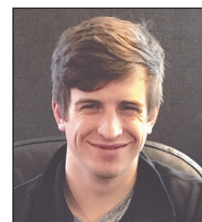
Walt Keast



Greg Roecker



Kirk Jacobsen



Tim Brink

KEAST AUTO CENTER HARLAN, IOWA

Call (712) 755-2116 or 800-234-4927 • Open: Mon. & Thurs. 7:30 am-8 pm; Tues., Wed. & Fri. 7:30 am-5:30 pm; Sat. 7:30 am-4 pm; view online at: keastford.com • keastchevybuickgmc.com • keastautocenter.com